



FRIENDS OF THE KERN RIVER PRESERVE

Volume 6, Issue 1

 Audubon CALIFORNIA

2002

AWESOME 8th ANNUAL FESTIVAL of the BIOREGIONS !

The Official Program for the 8th Annual Kern River Valley Festival of the Bioregions is inserted in this newsletter. The array of experts and offerings is truly spectacular. Kathy Biggs (Dragonflies), Pat Brown-Berry (Bats), David Hollingsworth (Astronomy), John Harris (Mammals), John Schmitt (Feathers), Jim Shevock (Plants), and John Wilson (Birds) are among several recognized leaders in their fields.



Plus, there will be an exquisite BioFest wildlife art show of many of America's top wildlife artists on the Wildlife Gallery & Studio grounds in Wofford Heights. Please check out the BioFest program carefully, register, and come and join us for a remarkable weekend. For the latest updates visit us on line at: www.valleywild.org/bioregionsfest.htm.

AUDUBON'S New ALLEN WILDLIFE SANCTUARY



Audubon has been working hard with the Army Corps of Engineers, National Fish and Wildlife Foundation, U.S. Fish and Wildlife Service, Allen South Fork Wildlife Sanctuary and private landowner Mr. Carl Allen to protect more land on the South Fork Kern.

Audubon recently acquired permanent conservation easements on 120 acres of land owned by Mr. Allen and 80 acres owned by the Allen South Fork Wildlife Sanctuary. We also bought in fee 292.5 acres to establish this sanctuary. This totals 492.5 acres.

Furthermore, our partners at the California Department of Fish and Game, the Wildlife Conservation Board and the Bureau of Land Management each acquired 120 acres to bring the total to 732.50 acres new land protected in the Kern River Valley.

2002 CALENDAR OF EVENTS

Saturday, April 6 - KRP Restoration Day

Saturday, April 20 - Pre-festival Clean-up

Friday-Sunday, April 26-28 - 8th Annual KRV Bioregions Festival

Monday-Thursday, April 29- May 2 - Post-BioFest Field Trips

Saturday, May 4 - Restoration Day

Saturday, May 18 - Restoration Day

Saturday, June 1 - 1st South Fork Kern Spring Bird Count

Sunday, June 2 - 1st South Fork Kern Butterfly Count

Saturday & Sunday, June 15 & 16 - 1st Valley Wild Amphibian & Reptile Celebration

Saturday, July 6 - 4th Annual South Fork Kern Summer Bird Count

Sunday, July 7 - 2nd Annual North Fork Kern Butterfly Count

Saturday, July 20 - KRP Workday

Friday-Sunday, July 26-28 & August 2-4 - 4th Annual Kern River Valley Hummingbird Celebration

Saturday, August 17 - KRP Workday

Saturday, Sept. 21 - KRP Workday

Friday-Monday, September 27-30 - 8th Annual Kern River Valley Turkey Vulture Festival

Saturday, October 19 - KRP Workday

For more information visit: www.kernriverpreserve.org, email: kprfriends@lightspeed.net, or phone: 760-378-3044.

continued on page 2

FRIENDS OF THE KERN RIVER PRESERVE



P.O. Box 833
Weldon, CA 93283
(760) 378-3044

email: krpfriends@lightspeed.net
website: <http://www.kernriverpreserve.org>

The Kern River Preserve is managed by Audubon-California for the preservation of California's largest contiguous cottonwood-willow riparian forest and the wildlife it supports. The Friends of the Kern River Preserve is a membership organization that provides financial support for the Preserve. Your support is critical to the success of the Kern River Preserve. Please consider making a donation by filling out the attached form and mailing it to the Friends.

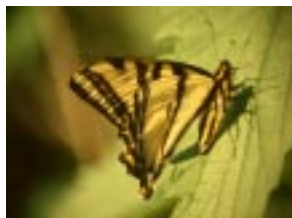
PRESERVE MANAGER REED TOLLEFSON
DIRECTOR OF KERN VALLEY OUTREACHBOB BARNES
NEWSLETTER EDITORBOB BARNES
NEWSLETTER DESIGN ALISON SHEEHEY
WEBMASTER ALISON SHEEHEY
MASTHEAD ARTWORKKEITH HANSEN

continued from page 1

By protecting this land, Audubon and our partners have helped to complete the protection landscape around the California Department of Fish and Game's Canebrake Ecological Reserve and connected it to the surrounding Domeland Wilderness Area administered by the USFS and BLM. This land is an integral part of Audubon's ongoing effort to protect an unbroken 14-mile riparian corridor from the Wilderness Boundary through to the Kern River Preserve.

California Department of Fish and Game and the Wildlife Conservation Board are working to further expand the Canebrake Ecological Reserve in the Capp Canyon Area. This area provides a wildlife movement corridor that connects the Canebrake Ecological Reserve with the Kiavah Wilderness. Currently WCB is working to complete appraisals and make offers to property owners.

New In 2002!!



Mark your calendar for three new events starting this June. The following will be headquartered out of the Kern River Preserve. The first South Fork Valley Spring Bird Count will be held on Saturday, June 1. The first

South Fork Kern Butterfly Count will be held Sunday, June 2. The first Valley Wild Amphibian & Reptile Celebration will be held Saturday & Sunday, June 15 & 16. All three

of these events will serve to heighten awareness and interest in the Kern River Valley's wildlife heritage. For more information, go to www.valleywild.org

A VISION FOR THE KERN RIVER VALLEY: Principles for economic & ecological sustainability

The Kern Vision document is now available online at www.valleywild.org/kernvision.htm. The Kern Vision is designed to be a model for use throughout the country; especially in rural areas on the cusp of anticipated rapid development.

The community input based Kern Vision was commissioned by the Outreach Program of the Friends of the Kern River Preserve and produced by Cal-Poly Pomona's 606 Studio. Bob Barnes will be giving a Kern Vision Power Point presentation at the BioFest during the Saturday, April 27th Speakers' Forum in Kernville. Our future can be great. The choice is ours. Check it out.

JOIN KRP FRIENDS' EMAIL LIST

Email is a timely and low-cost way for us to communicate with you between printed newsletters. Please help us by joining the KRP Friends' email list to receive key KRP updates.

By joining, you will be the first to know of special events and advances at KRP. You will also help us be more effective in our communications. Our list is NOT shared with anyone else. To join, send an email to krpfriends@lightspeed.net.

2003 HUMMER BANDERS CONFERENCE

The Kern River Preserve has been selected as the host for the August 2003 field days and conference of U.S. hummingbird banders. The Kern River Preserve (KRP) was selected over a bid from Texas. The 2003 gathering in the Kern River Valley follows the 1997 inaugural conference in Arizona, the 1999 event in Texas, and the



2001 meeting held in New Mexico. Primary banding sessions will be conducted at KRP. Scientific papers will be presented indoors in Kernville.

KERN VALLEYS DIVERSE WORLD

The natural diversity of the Kern River Valley has been featured in several publications over the last few months.

The November/December 2001 issue of *Outdoor California* featured the 1400+-acre Canebroke Ecological Reserve of the California Department of Fish & Game.



The Winter, 2001/2002 issue of *American Butterflies* feature article was on

the amazing butterfly diversity of the Kern River Valley and watershed; over 140 species.

The new Peterson Field Guide's *Hummingbirds of North America* by Sheri L. Williamson lists the Kern River Valley as one of the "Major Hotspots in North America" for viewing hummingbirds. Six species regularly occur here, some in amazingly large numbers.

For more information, contact Bob by email: kprfriends@lightspeed.net or phone: (760)-378-3044.

CBC RESULTS ON LINE

The results of the Kern River Valley and South Fork Valley Christmas Bird Counts may be found on line at www.birdsource.org. These two long-running counts cover the entire Kern River Valley. They provide valuable late-December/early January data on the status and distribution of our winter season birds. Thanks to all who participated: Bob Barnes (Kern Valley compiler), Eli Bernstein, Gordon Black, Terri Gallion, Frank Gibson, Theo Glenn, Murrelet Halterman, Joan Humphrey, Denise La Berteaux (South Fork compiler), Max Latham, Rozella Mattingly, Breck McAlexander, Mike McQuerry, Terri Middlemiss, Clark Moore, Jean Moore, Laura Pavliscak, John Schmitt, Joyce Siebold, Alison Sheehy, Bob Steele, Susan Steele, Steve Williams, John Wilson, and Peter Woodman.

COSTA RICA & VERACRUZ, MEXICO BENEFIT FIELD TRIPS

Once again, Murrelet Halterman is offering a field trip to Costa Rica and Jim Royer one to Veracruz, Mexico. Both trips are benefit fund-raisers for the Kern River Preserve and the Southern Sierra Research Station.

Jim's trip will take place this coming October 2002 and Murrelet's in January 2003. Both of these trips are centered around some of the world's best known nature experiences; the amazing raptor migration in Veracruz and the tropical diversity of Costa Rica.

For more information, contact Jim by email: jcadroyer@aol.com or phone: (805) 541-6850. Contact Murrelet by email: cuckoobuster@yahoo.com or phone: (760) 378-2185.

KRP FRIENDS INFO BOX

TRAIL GUIDE LEADS THE WAY

Alison Sheehy has produced an outstanding new trail guide for the Kern River Preserve's Nature Trail. The guide gives a leading edge, well-integrated introduction to the Preserve and its mission. It is enhanced by excellent graphics & photos. **Bob Barnes, Terri Gallion, and Reed Tollefson** reviewed draft copies.

Reed will place new numbered trail markers to match the numbered text in the guide. The printed version is slated for release at the upcoming April 26-28 BioFest. An on-line version is available for your use at www.kernriverpreserve.org/trail.htm.

GARDEN ANGELS

Mary Freeland, KRP Friends volunteer from Downey, is upgrading and supplementing the Preserve's two butterfly and hummingbird gardens. She is working with Reed, Bob, and local botanist and KRP Friends volunteer **Eve Laeger**.

Mary is developing a comprehensive plan that addresses effectiveness in attracting hummingbirds and butterflies, ease of maintenance, native plants, larval host plants for key species, and take home messages for visitors. Initial upgrades are planned in time for the late-April BioFest. Further work completion is planned in time for the late-July Hummingbird Celebration.

Thanks, Mary, for your extraordinary work.

Monika Davis, KRP Friends volunteer from Monterey, donated a wonderful sign promoting "With Your Help Future Home of Our Hummingbird/Butterfly Demonstration Garden" complete with painted on hummingbirds, butterflies, and a fund-raising thermometer. It is attached to the yard side of the Birders' Board out front of KRP Headquarters. Check it out the next time you visit!

THANK YOU! THANK YOU!! THANK YOU!!!

The following do so much work on behalf of the Kern River Preserve that we can't keep track of it all! So, here is a generic thanks to: **Ernie Flores, Bill Foster, Birdie Foster, Terri Gallion, Dave Harvey, Jeff King, Eve Laeger, "Buz" Lunsford, Alison Sheehy, and Sandra Wieser.**

continued on page 6

NORTHROP-GRUMMAN

KRP Friends member and volunteer Ernie Flores works for Northrop-Grumman (NG) corporation. Ernie initiated and facilitated a wonderful NG donation of hundreds of pieces of office furniture, bookshelves, office supplies, computers, monitors, laserjet printers, fax machines, and refrigerators.

This amazing bounty worth tens of thousands of dollars was then distributed to KRP Friends and more than twenty other non-profit organizations in the Kern River Valley.

Among those organizations benefiting from Northrop-Grumman's generosity were the Kern River Fish Hatchery, Kern River Valley Heritage Foundation, Kern River Valley



Hospital Foundation, Kern Valley Youth Center, Monache Intertribal Council, South Fork School & Community Foundation, Southern Sierra Research Station, and Youth 2000.

Thanks in particular to the on-the-ground Northrop-Grumman employees who helped make this gift happen: Keith Burton, Jim Crawford, Ernie Flores, Tim Hutchinson, Rick Perez, and Ginger Recanzone.

Thanks to those Kern Valley residents and businesses who helped with equipment pick-up and delivery: Builders' Mart (Mtn. Mesa), Michael Cunningham, Jeff King, Ron Monteague, Steve Spradlin, Mike Thomas, Thomas Refuse Service, Vicki Tanner, Reed Tollefson, and Carol Wermuth.

MANAGEMENT & ENDOWMENTS



It is critical that Audubon and our partners develop income streams that support on-going stewardship and management of the property we own. Animal populations and habitat need to be monitored, fences built and repaired, signs posted, weeds removed and many other tasks.

We also need to provide for

education and outreach to our community. As part of our land protection efforts we have also been working to establish management endowments to help fund these vital activities. Thus far, we have developed the following management funds:

1. Army Corps of Engineers has dedicated \$140,000 for a Kern River Management Endowment that will be administered by the National Fish and Wildlife Foundation. This will help fund Audubon's on-going work on the new Allen Acquisition.

2. Audubon helped the Allen South Fork Kern Wildlife Sanctuary secure \$39,000 to establish an endowment fund for this fledgling conservation organization.

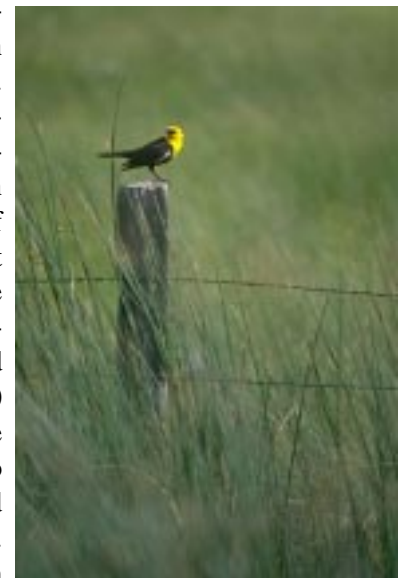
3. Mr. Carl Allen has also committed to donate over \$26,500 for use by the Kern River Preserve. Art Stine, one of Audubon's planned giving/development experts is working with Mr. Allen to use this seed money to establish an Audubon administered endowment fund specifically for the Kern River Preserve.

We will be working with Art to find new donors interested in helping us to build this endowment fund. If you are interested contact Reed Tollefson (760) 378-2531 or Bob Barnes (760) 378-3044 and they will get you started.

STEWARDSHIP & MANAGEMENT

Fencing - January-December, 2001: With funds from the U.S. Fish and Wildlife Service, Natural Resources Conservation Service, Bureau of Land Management matched by private donations, we removed dilapidated fence and built 14,500 feet of new range fence at the Kelso Creek Sanctuary and Kern River Preserve.

Although unglamorous, this work helps protect our riparian habitat and wildlife from trespass by livestock, off-road vehicles and hunters. We have on-going work in the Spring of 2002.



BARTOLAS PLANTING

20 - Acre Habitat Improvement

Kern River Preserve is working this spring to improve the wildlife habitat on the Bartolas Field. The 20-acre Bartolas Field is an excellent site for restoration to native habitat for wildlife habitat improvement.

The site is divided into two areas that will complement each other when the restoration process is completed.



The west ½ of the site has a history of being disked and plowed and has almost no native vegetation or value to wildlife. This 10 acres has good loamy-sand soil and the depth to the groundwater table is suitable for cottonwood, mulefat and saltbush.

These trees and shrubs will be planted in clumps and strips and will require

a growing season of irrigation. We already have a well and pump in place that can provide water to the temporary drip irrigation system that will be installed.

The east ½ of the site has not been disked and still has a good understory of native grasses and sedges with scattered willow trees. This side of the site has a shallow water table and can be planted with a mix of cottonwoods, ash, willows, wild rose and mulefat.

This project will significantly improve the plant species diversity and will benefit numerous species of our native wildlife. Fence work has been completed. This winter we propagated plants from cuttings and planting began in March 2002.

See volunteer work days on page 7 for volunteer opportunities.

PLANNING FOR THE FUTURE

Endowment Building for the Preserve

Do you think that the Kern River Preserve is a beautiful and unique place? Do you think that Audubon's activities in outreach and education, research, stewardship and land protection are creating a difference? Do you think that the wild animals and plants and their habitat on the preserve should be protected forever?

Imagine what it would be like with no wildlife festivals. No outreach and education. No research, land protection or stewardship. Imagine what it would be like if

there was no Kern River Preserve.

Would you like to help protect the Kern River Preserve? Would you like to support our activities and ensure that the wildlife have a sanctuary? Audubon needs help to ensure that we have funds to protect this unique and wonderful place. We are working to build an endowment that provides funds to support the preserve – over the long run.

Art Stine, Audubon-California's Director of Planned Giving, will be attending this year's BioFest. Art will host a planned giving information table at the Kern River Preserve on Saturday, April 27th and Sunday, April 28th. Art will be available to answer questions and facilitate planned giving to the Kern River Preserve.

We hope you will meet with Art and learn about ways to invest in the Preserve's future. Art may be contacted at any time by e-mail: PGARTSA@cs.com or by work telephone: 707-747-1507. Or call KRP Manager, Reed Tollefson at (760) 378-2531 or KRP Outreach Director, Bob Barnes at (760) 378-3044.

MANTER FIRE RESTORATION

PROJECTS: Sequoia National Forest

May - October, 2002

The Manter Fire started on July 22, 2000 at around 8:00 am near Manter Meadow within the Dome Land Wilderness and burned approximately 75,000 acres, 4,896 acres of which are in the Sequoia National Forest outside of Wilderness.

The Manter Fire was the largest wildfire in the history of the Sequoia National Forest. Certain areas have been targeted for ecological rehabilitation.

Community participation is a strong part of the restoration strategy and WildPlaces, in collaboration with the Cannell Meadow Ranger District, will coordinate volunteer activity for the Manter Restoration Projects this spring, summer and fall.



Volunteers are needed to come out on weekend events to help with stream stabilization, rare plant seed collection and distribution, black oak woodland restoration and wildlife monitoring. Please visit our website at www.WildPlaces.net or call (760) 447-1702 to get more information on how you can help.

continued from page 3

DONATIONS OF TIME & MATERIALS

Thanks to the following for their generous donations through the Friends of the Kern River Preserve:

Construction Crew - **Tetsekoua Adolphe, Jeff King, Breck McAlexander** and **Fredrick Englehorn** for fence construction.

Joe Fontaine – a brother HL 530 printer

Allan Franz – several (6-10) PC set-ups

Charlotte & Don Goodson - a 5' folding table

Dave Harvey for many hours of work on his Bluebird House Project, preserve maintenance and Bartolas RP.

Jeff King – Preserve signs upgrades

Eve Laeger, Dan Christiansen for helping with site visit and inventory of the new Allen/Audubon Sanctuary.

Mary Lumkin – a pair of 10 x 40 Zeiss binoculars

“Buz” Lunsford - a magnificent series of forty-two, leather bound, Peterson Field Guides

Marymount College, Rancho Palos Verdes – Class of Dr. Alan Franz fence demolition at KRP.

Carol Miller – a 5' slide projection screen

Alison Sheehey – web master, trail guide, and 8' table.

Dan Strait - USFWS Partners for Wildlife Program, for \$

Sandra Wieser – Preserve well monitoring

ALOHA! GOOD-BYE!

Two keystones of our KRP Friends Newsletter production team, **Wendy Higa** and **Betsy Steele**, independently moved to Hawaii in the second half of 2001! We are just now recovering.

Betsy was our lead writer and Wendy managed our database and formatted our newsletters. Both of these talented women's contributions to KRP Friends and the Kern River Valley were outstanding and both will be sorely missed. Now, they are off to new horizons in our fiftieth state. We wish them both the very, very best.

ALOHA! HELLO!

Happily, **Ann Beman** and **Alison Sheehey** have agreed to take over the newsletter responsibilities formerly held by Betsy and Wendy. Ann is a free-lance writer from Kernville who regularly contributes to the Kern Valley Sun and her feature articles appear in numerous magazines. She is taking over our lead writer position starting with our next issue.

Alison is currently the webmaster for our excellent www.kernriverpreserve.org web site. She has already assumed responsibility of formatting the KRP Friends newsletter starting with the issue you are now reading. Additionally, Alison has taken over management of the Preserve's database. Thanks to you both! Welcome!!!

THANK YOU DONORS & NEW

MEMBERS: We regret any omissions or misspellings. Please let us know so we can provide recognition in the next KRP Friends newsletter.

RAPTOR CIRCLE (\$1000-\$5000)

Sidney Barnes Dan Portway

PACIFIC FLYWAY PATROL (\$100-\$999)

Tom & Jeanne Anderson George & Judy Beaty

Marilyn & William Barclay Teresa Benson

Robert & Martha Brewer Roy & Joyce Carlson

John Dukat Marcia Furry

Harris & Rose Finkelstein Joe & Leah Fontaine

Cleobell Heiple Mary Ann Henry

Alice & David Hollingsworth Steve Jones

Brenda & Ken Kyle Jan Montgomery

Martha Oneal Robert Schonholtz

Daniel & Sandra Szymanski Robin Smith

SUPPORTERS (\$50-\$99)

Elizabeth Babcock Jane Cassity

U. Daniel Joan Franco

Michael & Judith Golub Larry & Eileen Kay

Charlotte & Don Goodson Paul Klahr

Jeanette Papp Barbara Porter

John & Janette Quinly John & Kathy Schick

Robin Shirley James Smith

Jeff & Jeanne Wheaton

FRIENDS (\$20-\$49)

Drew Adams & Y. Choi R. J. Adams

S. & K. Aulston D. & E. Bardos

Dennis & Linda Beason Kathy Brink

BevLen Haus B & B, Ridgecrest

G. Campbell Susan Cossins

Carol Coulter R. & J. Dake

Bernard & Dawn Dambron Monika Davis

Desert Planters of Ridgecrest Leslie Flint

Joanna Frawley Al Frolich

John & Mariam Graham L. Glenn

Monte & Enid Harper Geoff Keller

Ivan Hyatt & Nancy Siepel C. Kennedy

Paul & Kathy Jorgensen P. Lepome

Kern River Valley Heritage Foundation

David Lewis M. Lutz

K. Nichols Noel O'Connor

Trudy Pascoe J. & W. Stone

Mary Ellen Warters Jim White

William & Jane Wittman

AUDUBON CHAPTER DONORS

Conejo Valley AS Laguna Hills AS



FRIENDS OF THE KERN RIVER PRESERVE



Membership / Renewal Application

Name: _____ Phone: _____
 Address: _____ Fax: _____
 City: _____ State: _____ Zip: _____
 Email: _____ Check for change of address or other information

Please make checks payable to: **NAS/KRP Friends**

Application for:	<input type="checkbox"/> New Member	<input type="checkbox"/> Renewal
_____ \$1000 Raptor Circle	_____ \$20 Friend	
_____ \$100 Pacific Flyway Patrol	_____ Additional Contribution	
_____ \$50 Supporter	Total \$ _____	

Please send me information on planned giving.
 Please send me information on volunteer opportunities.

All members in the Friend and above categories receive our newsletter
 New members in the \$50 Supporter and above level are eligible for a KRPFriends T-shirt
 Please indicate size if you wish to receive a t-shirt.
 small medium large XL XXL

Mail to: FRIENDS OF THE KERN RIVER PRESERVE • P. O. Box 833 • Weldon, CA 93283

2002 Kern River Preserve Volunteer Opportunities

KRP Habitat Restoration Days.

We are working to plant native riparian vegetation on the 20 ac. Bartolas Site. We need volunteers to help lay out irrigation, plant and maintain the restoration site.

Where: Kern River Preserve Headquarters

When: 9 a.m. - Saturday

April 6 May 4 May 18

Bring: work gloves, wear sturdy outdoor clothes and shoes and a lunch. We will provide drinks.

April 20, 2002 - Festival Preparations - Help KRP Staff and Volunteers prepare the preserve for the Bioregions Festival

KRP - General Workdays - July Thru October we will be working every third Saturday. Call regarding work details.

July 20 August 17 September 21 October 19

Bring work gloves, wear sturdy outdoor clothes and shoes and a lunch. We will provide drinks. Please call KRP and leave a message or speak with Reed at (760) 378-2531. Let us know how many people will be coming with you. We can provide volunteers with a good campsite on the preserve with rustic accommodations. Work starts at 9 am

VOLUNTEERS are need to help during the following special projects and events:

- ◆ Festival & Preserve information and KRP Friends membership tables at the Biofest, Reptile Celebration, Hummingbird Celebration, and Vulture Fest.

- ◆ Nature Trail periodic maintenance.
- ◆ Visitor Center upgrade committee.
- ◆ Sign making for Preserve Headquarters and trails signs.
- ◆ Parking, set-up, take-down, and gopher assistance at the events listed above.
- ◆ Butterfly/Hummingbird Garden installation and periodic maintenance.



Volunteer Opportunity - Skilled volunteer painter, electrician carpenter and/or plumber - we will supply materials and a place for you to stay and/or camp. We will do our best to make you comfortable and welcome

For more information about restoration, workdays, or the above volunteer opportunity contact: Reed: (760) 378-2531 or email: rtoleffson@lightspeed.net and for festival work contact: Bob (760) 378-3044. or email: bbarnes@lightspeed.net.

KRP WISH LIST

If you have any of the following items on our "Wish List" or would like to make a tax-deductible donation of any kind to the Kern River Preserve, contact Reed at the Preserve by calling (760) 378-2531 or by email at krpfriends@lightspeed.net.

- ◆ Flatbed Trailer suitable for hauling a tractor or automobile.
- ◆ Medium Farm Tractor, Category III 3-point hitch



NON-PROFIT
U.S. POSTAGE
PAID
BAKERSFIELD, CA
PERMIT NO. 110

FRIENDS OF THE KERN RIVER PRESERVE
P.O. Box 833
Weldon, CA 93283

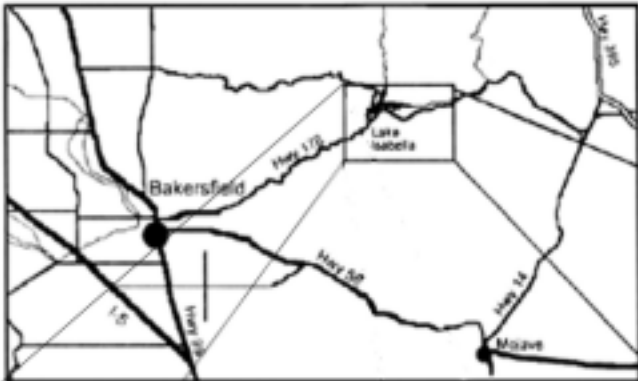
COMING SOON!

The 8th Annual
Kern River
Valley Festival
of the Bioregions

April 26-28, 2002

Return Service Requested

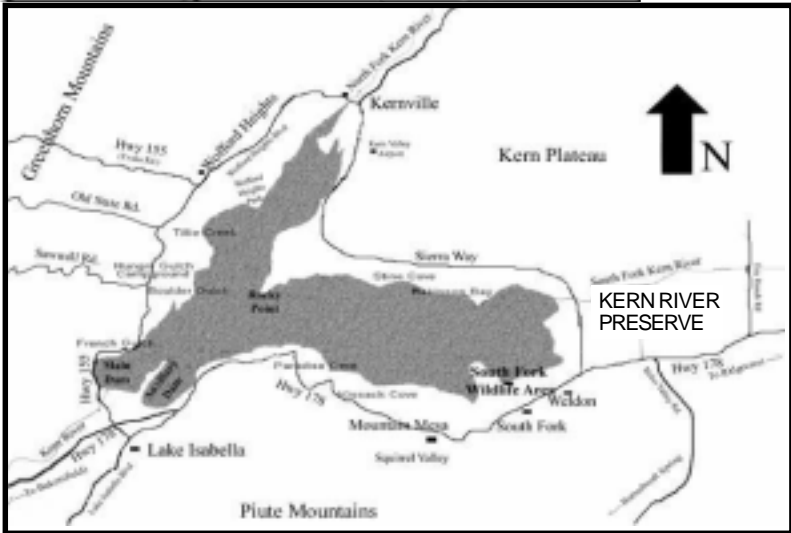
DATED MATERIAL



The Kern River Preserve is located 1.1 miles east of the intersection of State Highway 178 and Sierra Way in Weldon, Kern County, California.

Driving time from:

- Los Angeles 3.5 hours
- San Diego 5.5 hours
- San Francisco 6.5 hours
- Reno 7.5 hours



Cal Trans current road conditions: **1 (800) 427-7623**
1 (800) gas-road

For further information about the

**FRIENDS OF THE
KERN RIVER PRESERVE**

call: (760) 378-3044
email: krpfriends@lightspeed.net

or visit our websites:
KRP: <http://www.kernriverpreserve.org>
Festivals: <http://valleywild.org>